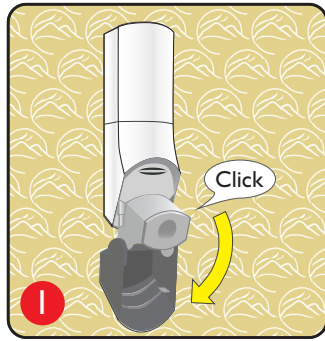


# DRY POWDER INHALER

## RESPICLICK



**1** HOLD UPRIGHT, MOUTHPIECE DOWN, OPEN CAP



**2** BREATHE OUT



**3** DO NOT BLOCK AIR VENTS



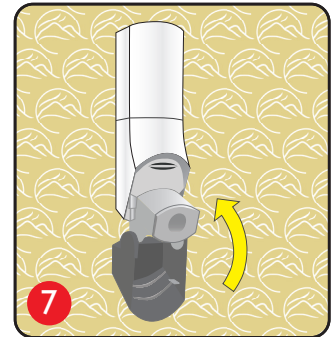
**4** DEEP BREATH IN AND HOLD



**5** BREATHE OUT



**6** RINSE, GARGLE AND SPIT



**7** CLOSE INHALER

## IMPORTANT INFORMATION

**Note:** Open cap and hear 'click' to load dose. Place mouthpiece between your teeth and close your lips.

**Empty** 20 doses left, the colour of the number will turn Red.  
Ask your pharmacist for disposal instructions.

**Expired?** Check the expiry date on the back of the device.  
Use within 1 month of opening.

**Reminders:** Keep the device dry.  
Do not breathe into the device.  
Close after use.  
Do not block air vents above the mouthpiece.

**Cleaning:** Wipe mouthpiece with a dry tissue or cloth.

This material is designed for information purposes only. It should not be used in place of medical advice, instruction and/or treatment. If you have specific questions, please consult your doctor or appropriate healthcare professional.

Illustrations developed for the Calgary COPD & Asthma Program by Sherri Simpson

**For more information on inhaled medications and device demos, visit our website at:**  
[www.ucalgary.ca/asthma](http://www.ucalgary.ca/asthma)

